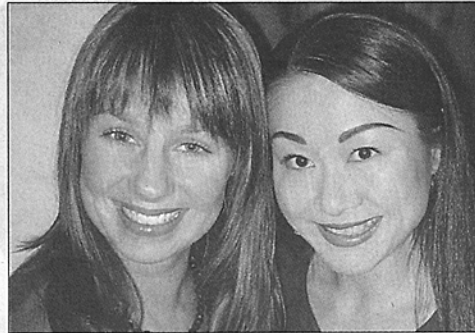


urban landscape



Burlesque beauty Cara Milk heated things up with her red hot performance at the Ruby Red cocktail celebrations at Sugar and Sugar.



Sugar and Sugar hostess Gillian Swan and Social Empire's Frances Hui checked out the bevy of beauties at Ruby Red.



Dr. Peter Centre's development manager Denise Meade with designer extraordinaire Simon Cooksley at the beautifully decorated red room of roses.



A BEVY OF BEAUTIES PAINTED the town red—Ruby Red—at Sugar and Sugar's Colour of Life cocktail celebration to benefit the Dr. Peter Centre. Designer Simon Cooksley's beautifully appointed red room, along with the art works of Niina Chebry and Carmen Larsen, provided the

perfect backdrop for red hot performances by Babalicious, Cara Milk and the Burlesque Beauties. In between the fun, fabulousness and live cabaret acts, the sexy crowd checked out delicious hors d'oeuvres courtesy of Diva at the Met. Seductive vocals of the Megan Fanning Trio provided musical accompaniment and a silent auction supported the West End comfort care centre for people living with HIV/AIDS.